

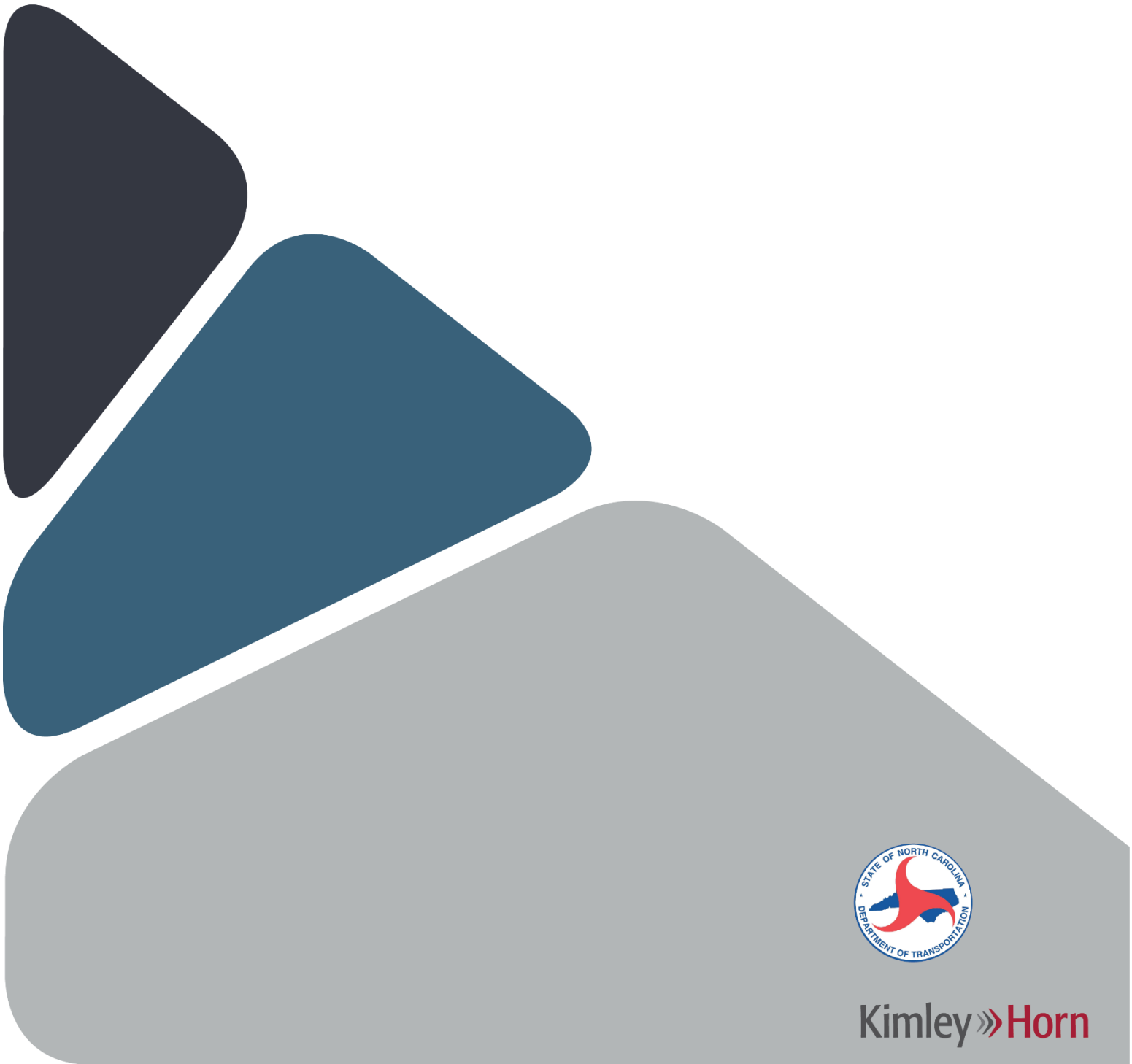
---

# Appendix H:

Corridor S

Future I-795

Population and Employment Growth  
Regional Model





# Table of Contents

## Tables

Table H-1. Population and Employment Growth – Goldsboro Regional Model Traffic Analysis Zone .....3

## Figures

Figure 7. Population Growth – Regional Model Traffic Analysis Zone Map.....8

Figure 8. Employment Growth – Regional Model Traffic Analysis Zone Map.....9



## Population and Employment Growth

This appendix presents base and future year population and employment growth for Corridor S of the North Carolina Strategic Transportation Corridors (STC). The following data is collected using the Goldsboro Regional Traffic Analysis Zone (TAZ) and is organized numerically by TAZ Number. TAZs within a 2-mile buffer area on both sides of the corridor were used to capture population and employment totals.



Table H-1. Population and Employment Growth – Goldsboro Regional Model Traffic Analysis Zone

TAZ Number	Population in 2010	Population in 2040	Annual Population Growth (2010-2040)	Total Number of Employed Persons in 2010	Total Number of Employed Persons in 2040	Annual Employment Growth (2010-2040)
1	254	318	0.8%	115	134	0.5%
2	357	447	0.8%	135	157	0.5%
4	118	148	0.8%	83	96	0.5%
5	734	918	0.8%	124	144	0.5%
6	616	771	0.8%	91	106	0.5%
7	70	88	0.8%	243	282	0.5%
8	448	561	0.8%	183	213	0.5%
9	513	642	0.8%	872	1,013	0.5%
10	124	155	0.8%	441	512	0.5%
14	963	1,205	0.8%	37	43	0.5%
15	739	925	0.8%	22	27	0.7%
16	458	573	0.8%	151	175	0.5%
17	427	534	0.8%	94	109	0.5%
18	197	247	0.8%	575	668	0.5%
19	20	25	0.8%	383	445	0.5%
20	735	920	0.8%	275	319	0.5%
21	942	1,179	0.8%	589	684	0.5%
22	168	210	0.8%	12	14	0.5%
23	227	284	0.8%	335	388	0.5%
31	1,157	1,448	0.8%	66	78	0.6%
32	335	419	0.8%	558	648	0.5%
33	44	55	0.8%	0	0	0.0%
35	12	13	0.3%	381	442	0.5%
36	76	83	0.3%	317	368	0.5%
37	5	5	0.0%	414	482	0.5%
38	0	0	0.0%	17	20	0.5%
39	185	231	0.7%	141	164	0.5%
40	299	374	0.8%	355	412	0.5%
41	833	1,042	0.8%	303	353	0.5%
42	1,294	1,619	0.8%	671	778	0.5%
43	215	269	0.8%	597	692	0.5%
44	351	439	0.8%	35	41	0.5%
45	842	1,054	0.8%	30	35	0.5%
47	623	745	0.6%	3	4	1.0%
63	491	588	0.6%	7	9	0.8%
64	124	148	0.6%	1,100	1,376	0.8%

(Continued on next page)



Table H-2. Population and Employment Growth – Goldsboro Regional Model Traffic Analysis Zone  
(Continued)

TAZ Number	Population in 2010	Population in 2040	Annual Population Growth (2010-2040)	Total Number of Employed Persons in 2010	Total Number of Employed Persons in 2040	Annual Employment Growth (2010-2040)
65	2,264	2,709	0.6%	37	46	0.7%
66	280	335	0.6%	136	171	0.8%
67	2,354	2,817	0.6%	210	263	0.8%
68	410	491	0.6%	54	68	0.8%
69	811	970	0.6%	105	131	0.7%
72	957	1,145	0.6%	52	67	0.9%
73	61	67	0.3%	72	84	0.5%
74	30	33	0.3%	957	1,111	0.5%
75	398	476	0.6%	990	1,240	0.8%
76	1,108	1,386	0.8%	248	288	0.5%
81	974	1,219	0.8%	512	595	0.5%
97	289	316	0.3%	477	554	0.5%
98	283	354	0.8%	256	298	0.5%
101	92	115	0.8%	89	103	0.5%
106	409	489	0.6%	33	41	0.7%
107	463	554	0.6%	150	188	0.8%
108	2,135	2,555	0.6%	25	31	0.7%
109	1	1	0.0%	0	0	0.0%
110	415	519	0.8%	119	138	0.5%
112	4	5	0.8%	800	930	0.5%
115	55	60	0.3%	3	3	0.0%
118	280	350	0.8%	6	7	0.5%
121	52	57	0.3%	19	22	0.5%
122	370	463	0.8%	15	17	0.4%
123	546	683	0.8%	15	17	0.4%
124	1,179	1,475	0.8%	22	26	0.6%
127	163	204	0.8%	168	195	0.5%
128	427	534	0.8%	670	778	0.5%
130	354	443	0.8%	52	60	0.5%
131	418	523	0.8%	88	102	0.5%
132	56	70	0.8%	719	835	0.5%
133	13	16	0.7%	275	319	0.5%
137	92	115	0.8%	254	295	0.5%
139	213	267	0.8%	79	92	0.5%
140	149	186	0.7%	120	139	0.5%

(Continued on next page)



Table H-3. Population and Employment Growth – Goldsboro Regional Model Traffic Analysis Zone  
(Continued)

TAZ Number	Population in 2010	Population in 2040	Annual Population Growth (2010-2040)	Total Number of Employed Persons in 2010	Total Number of Employed Persons in 2040	Annual Employment Growth (2010-2040)
143	3	4	1.0%	42	49	0.5%
144	543	650	0.6%	4	5	0.8%
145	1,032	1,235	0.6%	46	59	0.8%
147	633	757	0.6%	109	136	0.7%
148	129	161	0.7%	29	34	0.5%
151	135	162	0.6%	31	40	0.9%
152	554	663	0.6%	114	144	0.8%
153	20	25	0.8%	729	846	0.5%
154	149	186	0.7%	227	264	0.5%
155	89	97	0.3%	2	2	0.0%
156	245	307	0.8%	4	5	0.8%
157	928	1,110	0.6%	61	76	0.7%
158	153	183	0.6%	77	96	0.7%
159	795	951	0.6%	223	280	0.8%
200	0	0	0.0%	0	0	0.0%
201	0	0	0.0%	0	0	0.0%
205	0	0	0.0%	0	0	0.0%
206	0	0	0.0%	0	0	0.0%
207	0	0	0.0%	0	0	0.0%
208	0	0	0.0%	0	0	0.0%
209	0	0	0.0%	0	0	0.0%
211	4	77	10.4%	0	0	0.0%
213	0	0	0.0%	0	0	0.0%
214	0	0	0.0%	0	0	0.0%
215	0	0	0.0%	0	0	0.0%
216	0	0	0.0%	0	0	0.0%
217	0	0	0.0%	0	0	0.0%
218	0	0	0.0%	0	0	0.0%
219	0	0	0.0%	0	0	0.0%
220	0	0	0.0%	0	0	0.0%
223	0	0	0.0%	0	0	0.0%
224	0	0	0.0%	0	0	0.0%
232	0	0	0.0%	0	0	0.0%
233	0	0	0.0%	0	0	0.0%
234	0	0	0.0%	0	0	0.0%

(Continued on next page)



Table H-4. Population and Employment Growth – Goldsboro Regional Model Traffic Analysis Zone  
(Continued)

TAZ Number	Population in 2010	Population in 2040	Annual Population Growth (2010-2040)	Total Number of Employed Persons in 2010	Total Number of Employed Persons in 2040	Annual Employment Growth (2010-2040)
235	0	0	0.0%	0	0	0.0%
236	0	0	0.0%	0	0	0.0%
239	0	0	0.0%	0	0	0.0%
241	80	88	0.3%	8	9	0.4%
242	107	117	0.3%	0	0	0.0%
243	179	224	0.8%	18	21	0.5%
251	223	244	0.3%	8	9	0.4%
254	57	62	0.3%	0	0	0.0%
255	36	45	0.8%	0	0	0.0%
257	126	158	0.8%	323	375	0.5%
258	32	38	0.6%	9	11	0.7%
259	73	80	0.3%	0	0	0.0%
260	124	136	0.3%	11	13	0.6%
261	83	104	0.8%	82	94	0.5%
271	64	70	0.3%	8	9	0.4%
275	70	84	0.6%	60	75	0.8%
278	8	878	17.0%	0	63	15.0%
281	30	36	0.6%	9	11	0.7%
282	147	161	0.3%	3	3	0.0%
283	198	217	0.3%	2	2	0.0%
285	243	291	0.6%	178	223	0.8%
286	709	887	0.8%	16	20	0.8%
287	234	293	0.8%	148	172	0.5%
288	362	453	0.8%	480	557	0.5%
289	279	305	0.3%	27	31	0.5%
290	491	537	0.3%	25	29	0.5%
291	136	149	0.3%	20	23	0.5%
293	436	477	0.3%	11	13	0.5%
298	108	118	0.3%	2	2	0.0%
301	71	89	0.8%	63	73	0.5%
302	534	584	0.3%	53	63	0.6%
303	166	199	0.6%	352	440	0.8%
311	73	87	0.6%	45	56	0.7%
312	143	156	0.3%	18	21	0.5%

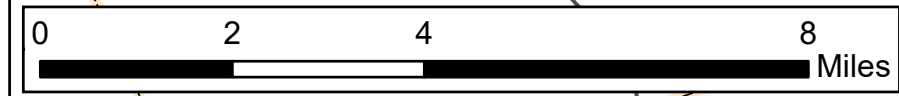
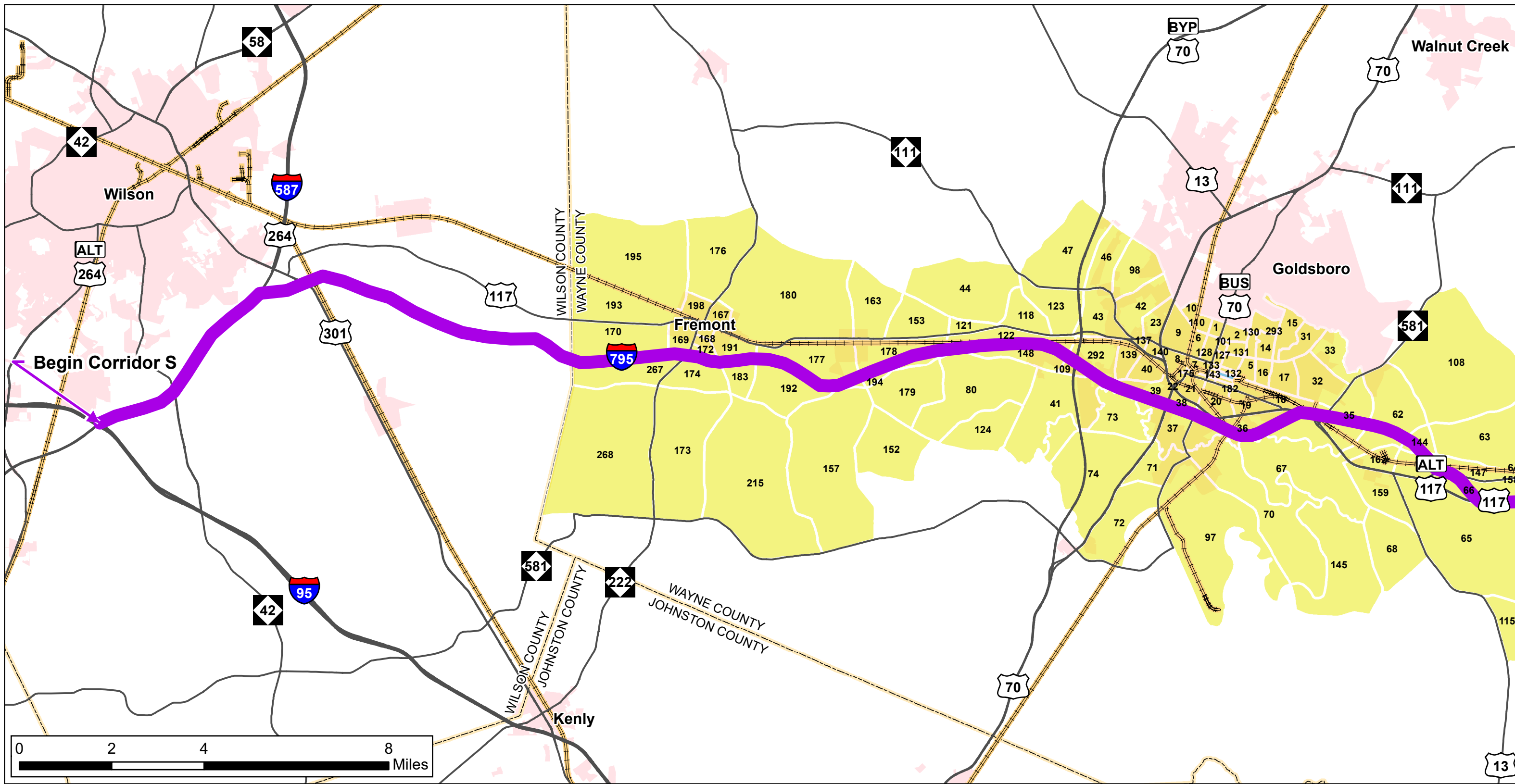
(Continued on next page)



Table H-5. Population and Employment Growth – Goldsboro Regional Model Traffic Analysis Zone  
(Continued)

TAZ Number	Population in 2010	Population in 2040	Annual Population Growth (2010-2040)	Total Number of Employed Persons in 2010	Total Number of Employed Persons in 2040	Annual Employment Growth (2010-2040)
313	40	48	0.6%	7	9	0.8%
314	191	209	0.3%	13	15	0.5%
322	313	342	0.3%	11	13	0.6%
324	167	209	0.8%	10	12	0.6%
325	740	810	0.3%	137	159	0.5%
326	538	589	0.3%	8	9	0.4%
332	0	0	0.0%	0	0	0.0%
338	247	309	0.8%	65	75	0.5%
339	37	44	0.6%	103	129	0.8%





**NC STRATEGIC TRANSPORTATION CORRIDOR S (STC)**

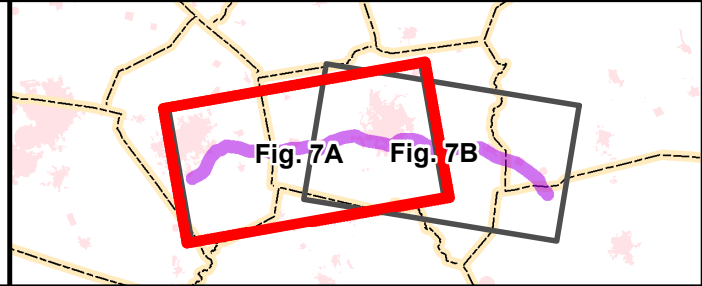
FEBRUARY 2022  
Source: NOneMap, NCDOT GIS, ESRI

**Legend**

- STC Highway Corridor S
- Interstate
- U.S./N.C. Route
- Rail
- Major Water Bodies
- Municipal Boundary
- Counties

**Goldsboro Regional Model Annual Population Growth**

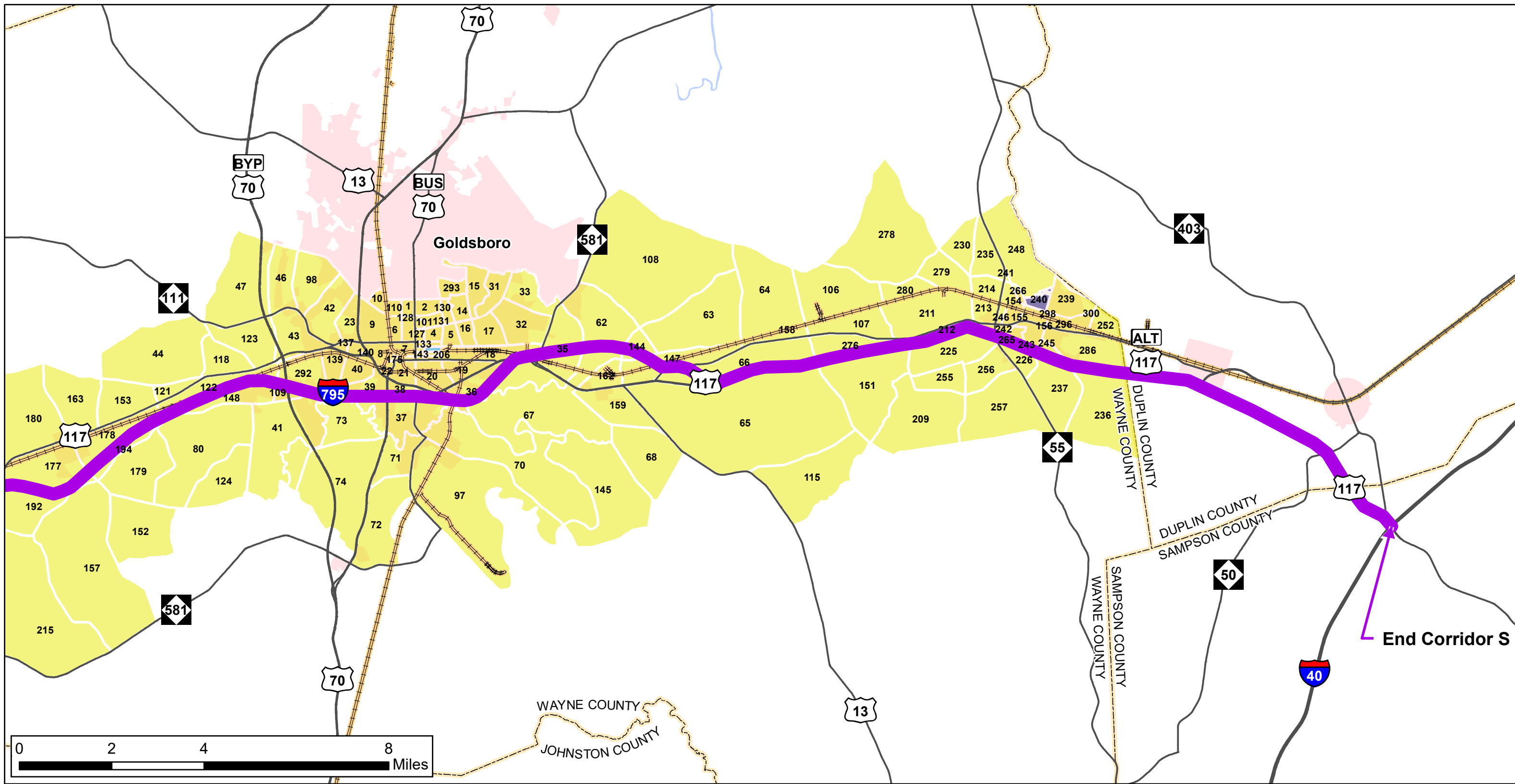
- 0% - 5%
- 10% - 15%



**CORRIDOR S: POPULATION GROWTH - REGIONAL MODEL TRAFFIC ANALYSIS ZONES (TAZ)**

**FIGURE 7A: I-95/I-795 TO GOLDSBORO**

No regional models were available in other segments of the corridor. TAZ Number on the map correlates to TAZ Number in Appendix G of the Mobility Analysis Report. Additional population and employment data can be found in the data tables.  
\*TAZ Number is the 1-4 digit solid, bold number in map. Goldsboro Annual Growth is 2010-2040.



**NC STRATEGIC TRANSPORTATION CORRIDOR S (STC)**

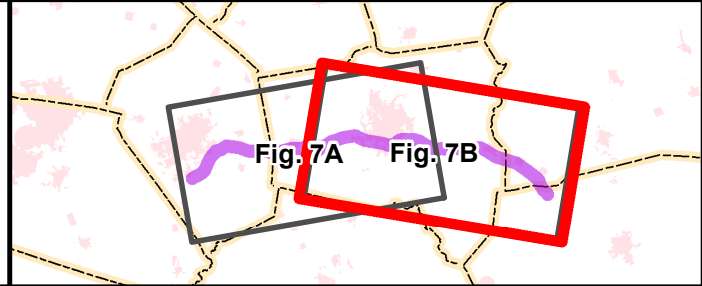
FEBRUARY 2022  
Source: NCOneMap, NCDOT GIS, ESRI

**Legend**

- STC Highway Corridor S
- Interstate
- U.S./N.C. Route
- Rail
- Major Water Bodies
- Municipal Boundary
- Counties

**Goldsboro Regional Model Annual Population Growth**

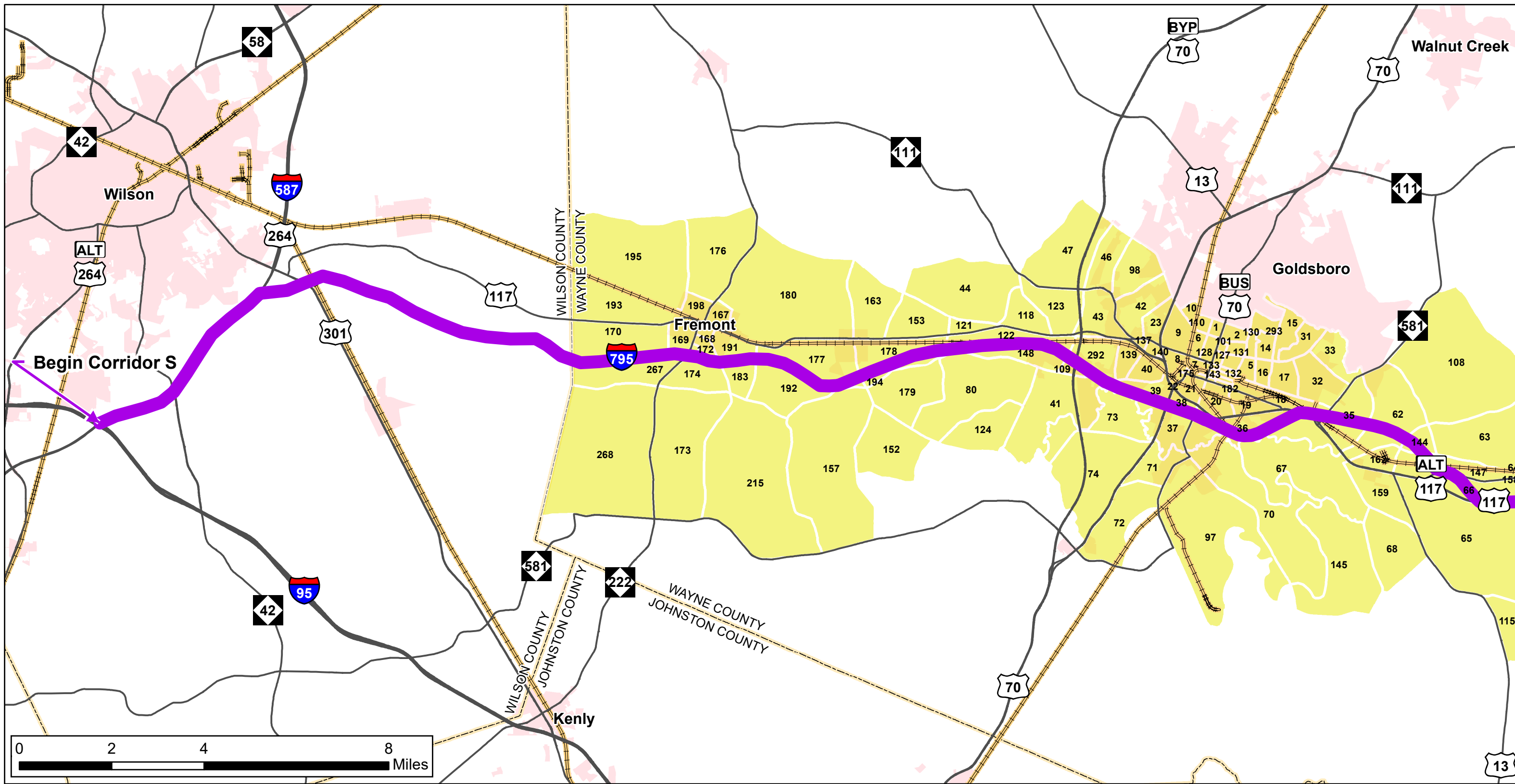
- 0% - 5%
- 10% - 15%
- 15% - 20%



**CORRIDOR S: POPULATION GROWTH - REGIONAL MODEL TRAFFIC ANALYSIS ZONES (TAZ)**

**FIGURE 7B: GOLDSBORO TO I-40**

No regional models were available in other segments of the corridor. TAZ Number on the map correlates to TAZ Number in Appendix G of the Mobility Analysis Report. Additional population and employment data can be found in the data tables.  
\*TAZ Number is the 1-4 digit solid, bold number in map. Goldsboro Annual Growth is 2010-2040.



**NC STRATEGIC TRANSPORTATION CORRIDOR S (STC)**

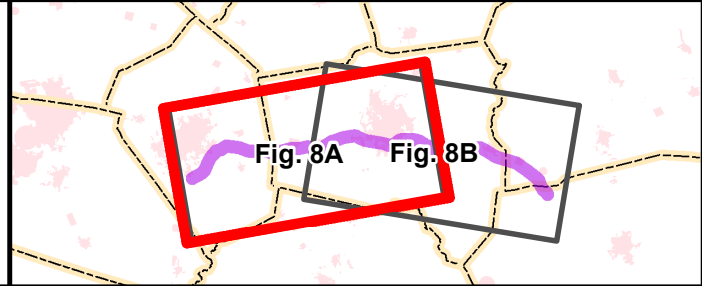
FEBRUARY 2022  
Source: NOneMap, NCDOT GIS, ESRI

**Legend**

- STC Highway Corridor S
- Interstate
- U.S./N.C. Route
- Rail
- Major Water Bodies
- Municipal Boundary
- Counties

**Goldsboro Regional Model Annual Employment Growth**

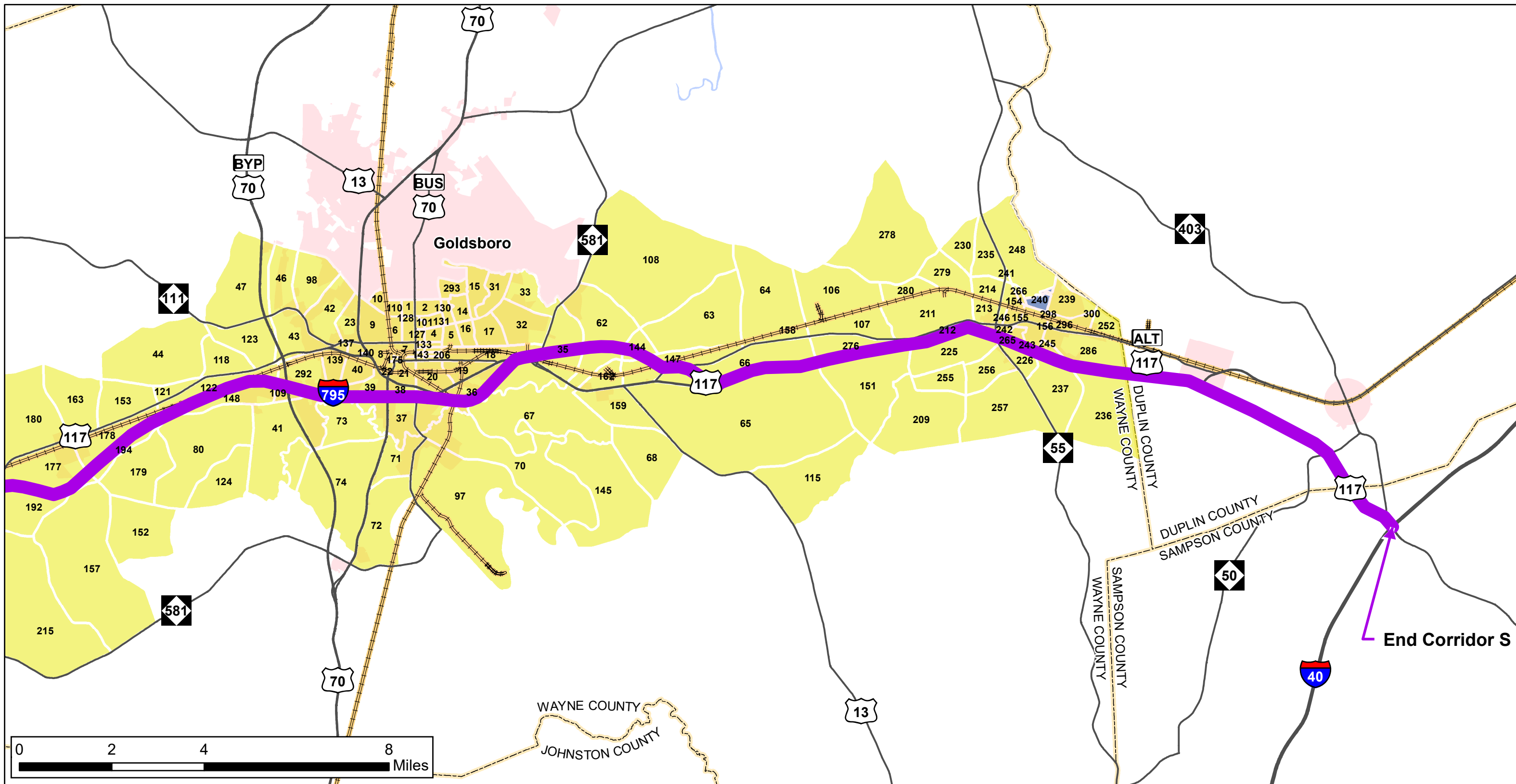
- 0% - 3.75%



**CORRIDOR S: EMPLOYMENT GROWTH - REGIONAL MODEL TRAFFIC ANALYSIS ZONES (TAZ)**

**FIGURE 8A: I-95/I-795 TO GOLDSBORO**

No regional models were available in other segments of the corridor. TAZ Number on the map correlates to TAZ Number in Appendix G of the Mobility Analysis Report. Additional population and employment data can be found in the data tables.  
\*TAZ Number is the 1-4 digit solid, bold number in map. Goldsboro Annual Growth is 2010-2040.

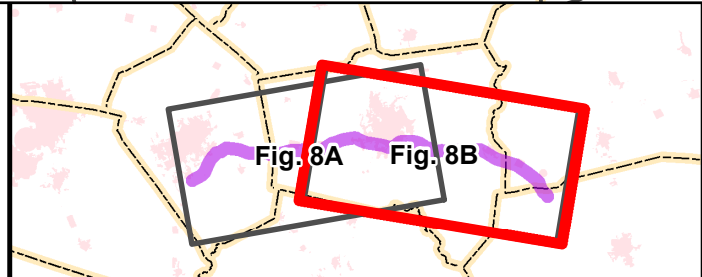


**NC STRATEGIC TRANSPORTATION CORRIDOR S (STC)**

FEBRUARY 2022  
Source: NCOneMap, NCDOT GIS, ESRI

- Legend**
- STC Highway Corridor S
  - Interstate
  - U.S./N.C. Route
  - Rail
  - Major Water Bodies
  - Municipal Boundary
  - Counties

- Goldsboro Regional Model Annual Employment Growth**
- 0% - 3.75%
  - 11.25% - 15.0%



**CORRIDOR S: EMPLOYMENT GROWTH - REGIONAL MODEL TRAFFIC ANALYSIS ZONES (TAZ)**

**FIGURE 8B: GOLDSBORO TO I-40**

No regional models were available in other segments of the corridor. TAZ Number on the map correlates to TAZ Number in Appendix G of the Mobility Analysis Report. Additional population and employment data can be found in the data tables.  
\*TAZ Number is the 1-4 digit solid, bold number in map. Goldsboro Annual Growth is 2010-2040.